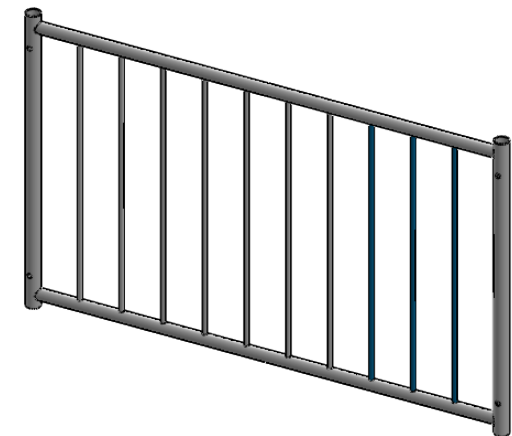
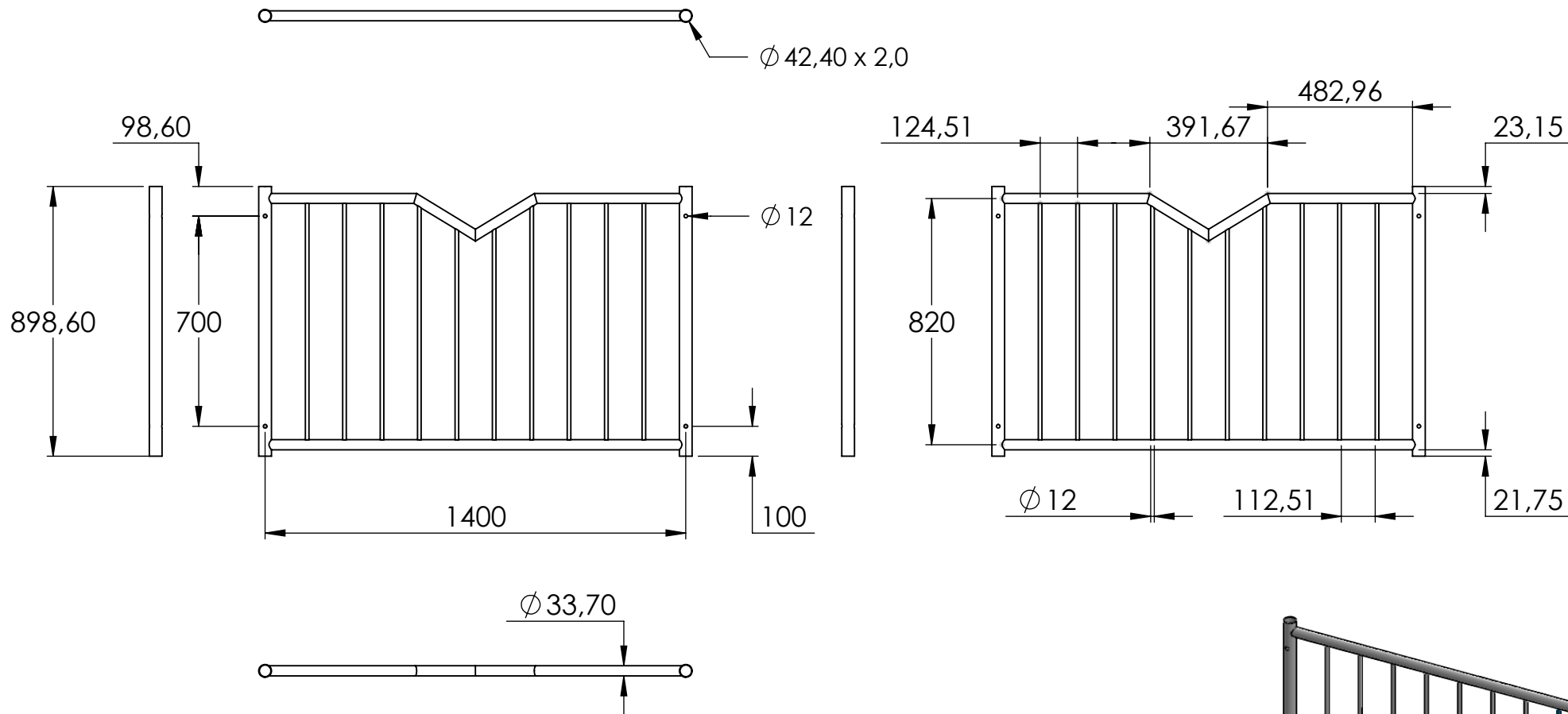
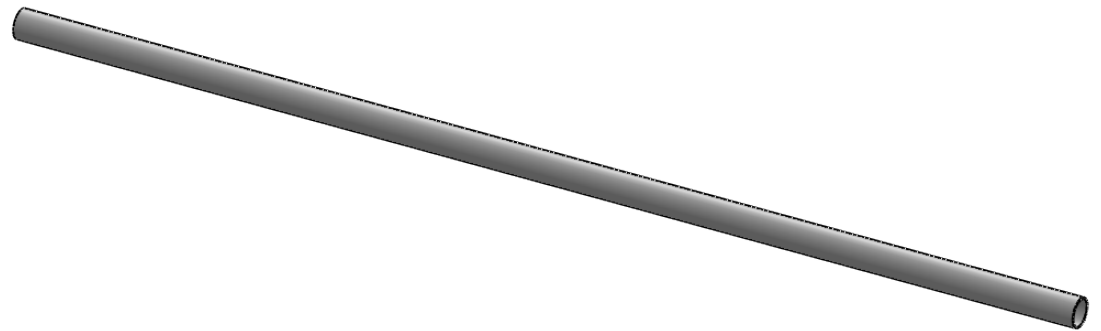
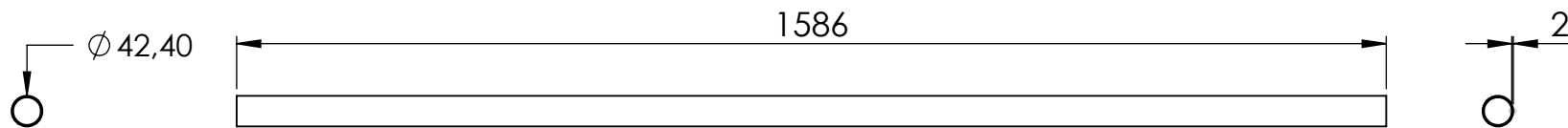


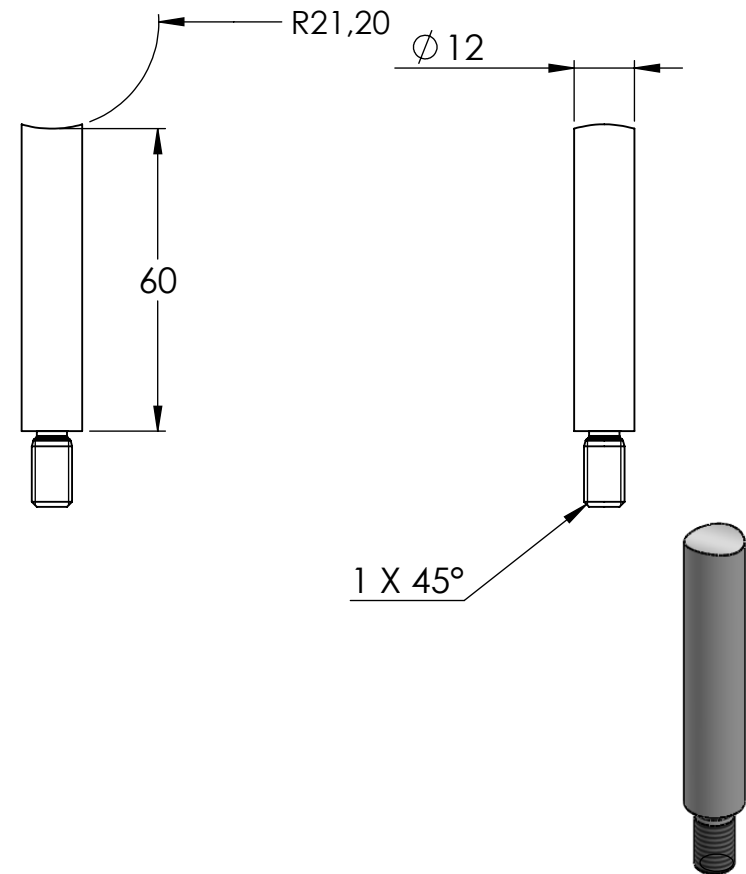
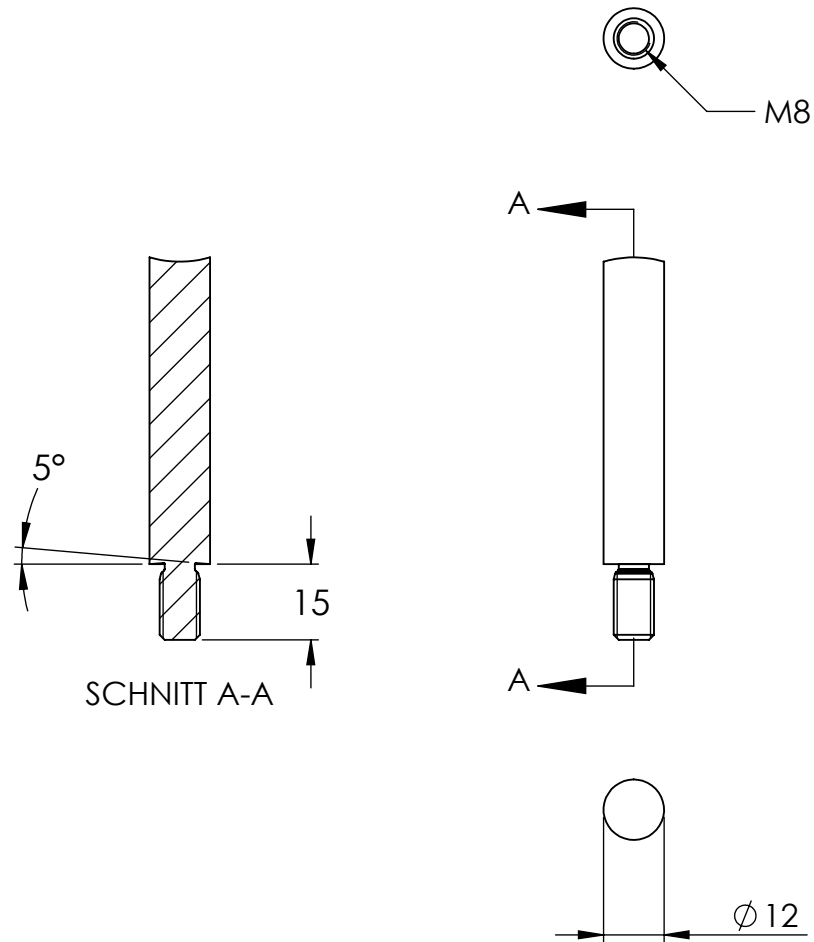
|                                    |          |            |   |                                  |
|------------------------------------|----------|------------|---|----------------------------------|
| Name                               | Signatur | Datum      | Artikelnummer   | Oberfläche: Geschliffen Korn 240 |
| Ch. Höfig                          | CH       | 15.03.2024 | 57622-240   |                                  |
| Werkstoff:<br>1.4301 (X5CrNi18-10) |          |            | Hersteller  | Blattformat                      |
|                                    |          |            |  | A4                               |
| Gewicht: 18.700 kg                 |          |            | Maßstab: 1:20   | Version: 1 Deutsch Blatt 1 von 8 |



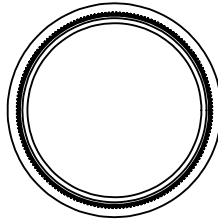
|                                    |          |            |                 |                                  |
|------------------------------------|----------|------------|-----------------|----------------------------------|
| Name                               | Signatur | Datum      | Artikelnummer   | Oberfläche: Geschliffen Korn 240 |
| Ch. Höfig                          | CH       | 15.03.2024 | 57622-240 Teil1 |                                  |
| Werkstoff:<br>1.4301 (X5CrNi18-10) |          |            | Hersteller      | Feldmann                         |
| Gewicht: 14.845 kg                 |          |            | Maßstab: 1:20   | Version: 1 Deutsch Blatt 2 von 8 |
|                                    |          |            |                 | Blattformat<br>A4                |



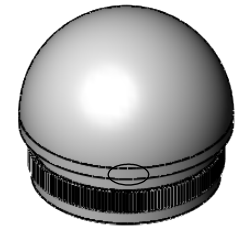
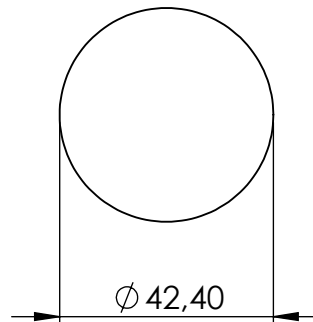
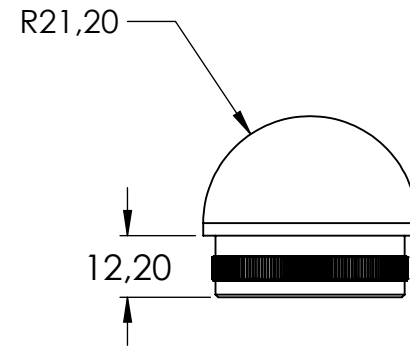
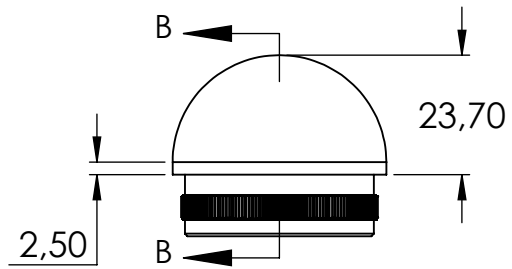
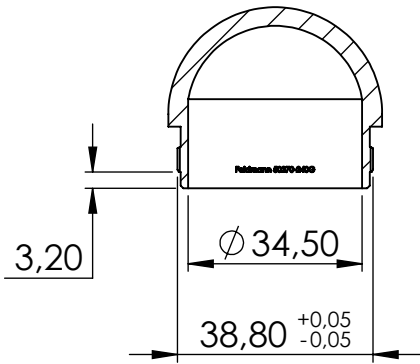
|                                    |          |            |   |  |
|------------------------------------|----------|------------|---|--|
| Name                               | Signatur | Datum      | Artikelnummer   | Oberfläche: Geschliffen Korn 240       |
| Ch. Höfig                          | CH       | 15.03.2024 | 576X2-240 Teil2   |  |
| Werkstoff:<br>1.4301 (X5CrNi18-10) |          |            | Hersteller  | Blattformat                            |
|                                    |          |            |  | A4                                     |
| Gewicht: 3.180 kg                  |          |            | Maßstab: 1:10   | Version: 1    Deutsch    Blatt 3 von 8 |



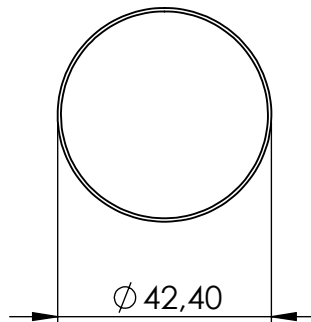
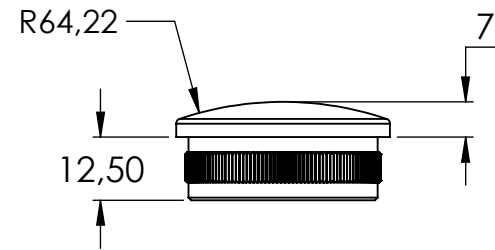
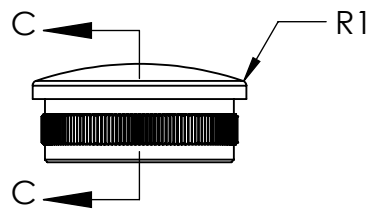
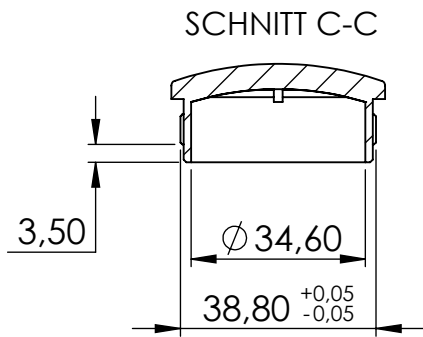
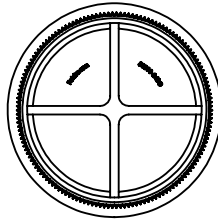
|                                    |          |            |   |  |
|------------------------------------|----------|------------|---|--|
| Name                               | Signatur | Datum      | Artikelnummer   | Oberfläche: Geschliffen Korn 240       |
| Ch. Höfig                          | CH       | 15.03.2024 | 50236-240-60  |  |
| Werkstoff:<br>1.4301 (X5CrNi18-10) |          |            | Hersteller  | Blattformat                            |
|                                    |          |            |  | A4                                     |
| Gewicht: 0.059 kg                  |          |            | Maßstab: 1:1.5  | Version: 1    Deutsch    Blatt 4 von 8 |



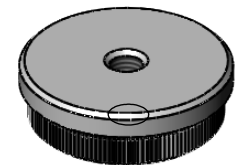
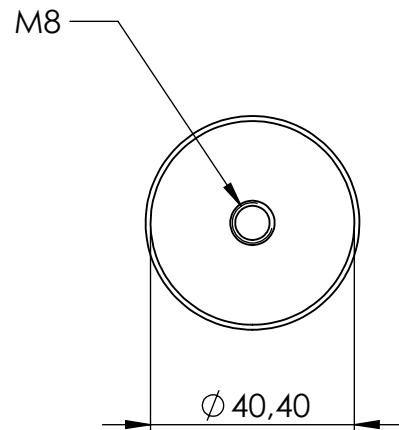
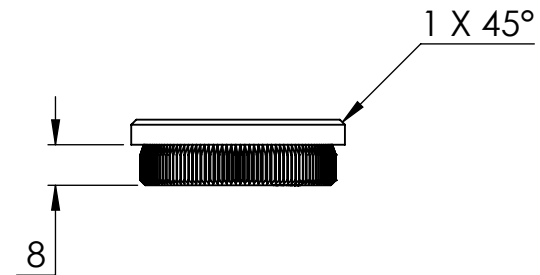
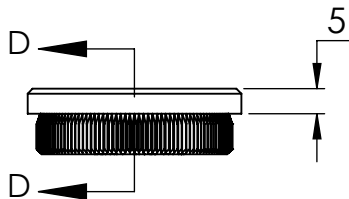
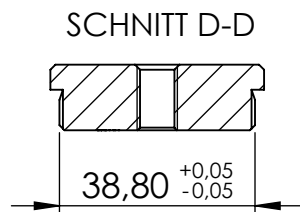
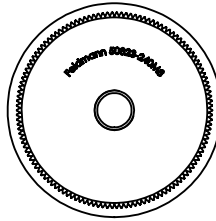
SCHNITT B-B



|                                    |          |            |   |  |
|------------------------------------|----------|------------|---|--|
| Name                               | Signatur | Datum      | Artikelnummer   | Oberfläche: Geschliffen Korn 240       |
| Ch. Höfig                          | CH       | 15.03.2024 | 50270-240G  |  |
| Werkstoff:<br>1.4301 (X5CrNi18-10) |          |            | Hersteller  | Blattformat                            |
|                                    |          |            |  | A4                                     |
| Gewicht: 0.097 kg                  |          |            | Maßstab: 1:1.5  | Version: 1    Deutsch    Blatt 5 von 8 |

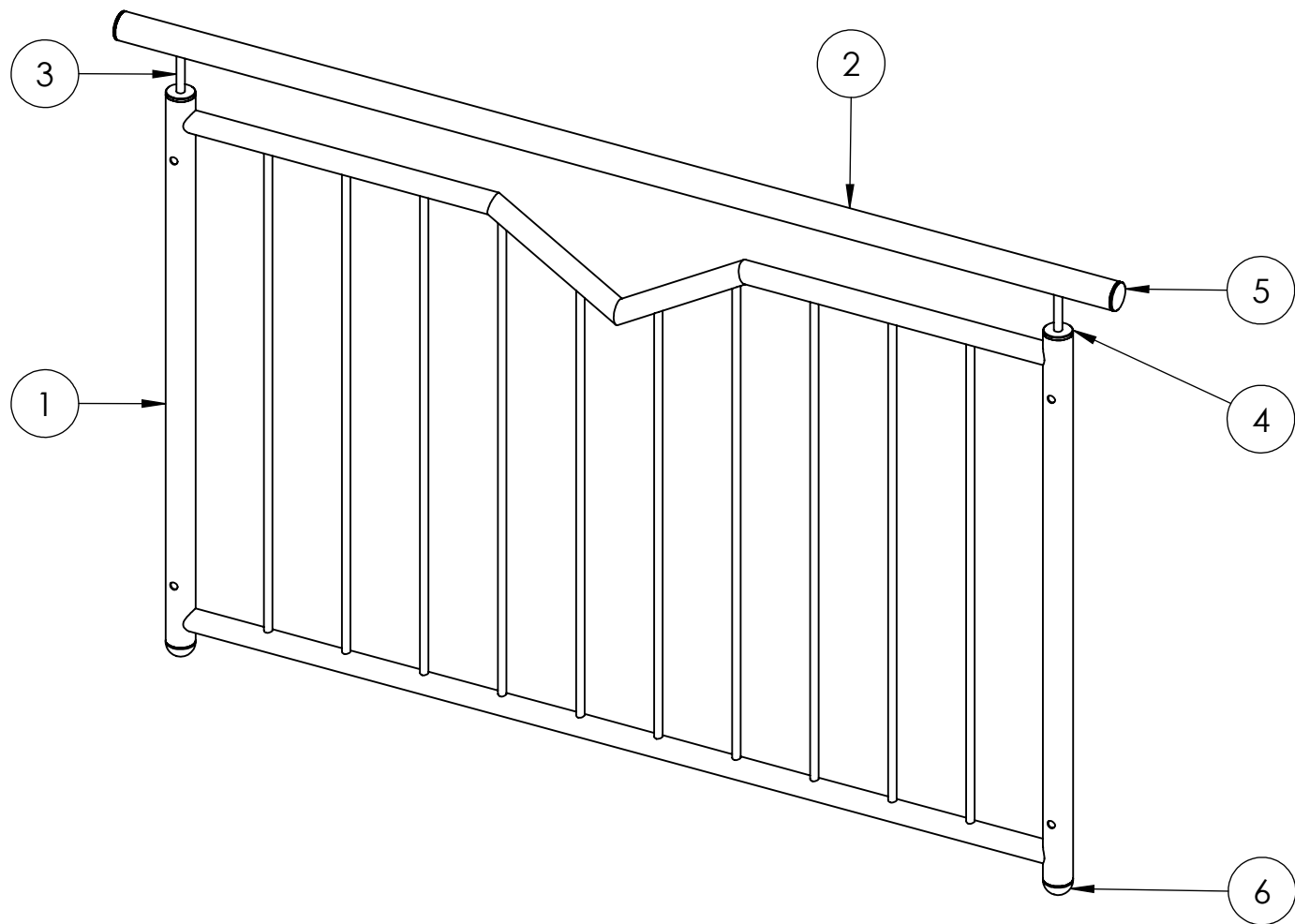


|                                    |          |            |   |  |
|------------------------------------|----------|------------|---|--|
| Name                               | Signatur | Datum      | Artikelnummer   | Oberfläche: Geschliffen Korn 240       |
| Ch. Höfig                          | CH       | 15.03.2024 | 50310-240G  |  |
| Werkstoff:<br>1.4301 (X5CrNi18-10) |          |            | Hersteller  | Blattformat                            |
|                                    |          |            |  | A4                                     |
| Gewicht: 0.058 kg                  |          |            | Maßstab: 1:1.5  | Version: 1    Deutsch    Blatt 6 von 8 |



|                                    |          |                |   |                                  |
|------------------------------------|----------|----------------|---|----------------------------------|
| Name                               | Signatur | Datum          | Artikelnummer   | Oberfläche: Geschliffen Korn 240 |
| Ch. Höfig                          | CH       | 15.03.2024     | 50323-240M8   |                                  |
| Werkstoff:<br>1.4301 (X5CrNi18-10) |          |                | Hersteller  | Blattformat                      |
|                                    |          |                |  | A4                               |
| Gewicht: 0.123 kg                  |          | Maßstab: 1:1.5 | Version: 1  | Deutsch                          |
|                                    |          | Blatt 7 von 8  |   |                                  |

| POS-NR. | BENENNUNG       | MENGE |
|---------|-----------------|-------|
| 1       | 57622-240 Teil1 | 1     |
| 2       | 576X2-240 Teil2 | 1     |
| 3       | 50236-240-60    | 2     |
| 4       | 50323-240M8     | 2     |
| 5       | 50310-240G      | 2     |
| 6       | 50270-240G      | 2     |



|                                    |          |            |   |  |
|------------------------------------|----------|------------|---|--|
| Name                               | Signatur | Datum      | Artikelnummer   | Oberfläche: Geschliffen Korn 240       |
| Ch. Höfig                          | CH       | 15.03.2024 | 57622-240   |  |
| Werkstoff:<br>1.4301 (X5CrNi18-10) |          |            | Hersteller  | Blattformat                            |
|                                    |          |            |  | A4                                     |
| Gewicht: 18.700 kg                 |          |            | Maßstab: 1:10   | Version: 1    Deutsch    Blatt 8 von 8 |